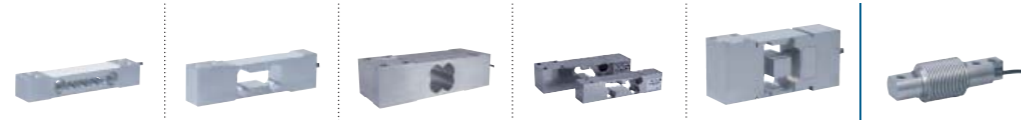


LOAD CELLS



* C6 on request

Model	AQ	AG	AP	AXL - AXH	AK	F60X
Type	Single point					Bending
Rated load capacity (C.N.)	5 kg ... 35 kg	1 kg ... 100 kg	75 kg ... 1.5 t	10 kg ... 500 kg	6 kg ... 300 kg	5 kg ... 5 t
Accuracy class	C3 / C4	C3*	C3	C3	C3	C3*
Combined error (% C.N.)	0.017 / 0.013	0.017	0.017	0.017	0.017	0.017
Construction	Aluminum	Aluminum	Aluminum	Stainless steel	Stainless steel	Stainless steel
Protection	Coated, IP65	Coated, IP65	Coated, IP65	Sealed, IP69K	Sealed, IP68	Sealed, IP68
Admissible platform size (mm)	350 x 350	400 x 400	up to 1 000 x 1 000	up to 600 x 600	up to 600 x 600	-
Certifications	OIML, NTEP, IECEx	OIML, NTEP, ATEX, FM, IECEx	OIML, ATEX, FM, IECEx	OIML, ATEX, IECEx	OIML, NTEP, ATEX, FM, IECEx	OIML, ATEX, FM, IECEx

ELECTRONICS



● : Standard - ○ : Optional

Model	AAD	DVX	DVS	eNod3-Din	eNod3-Box	eNod4
Type	Digital Load Cells			Controller / Transmitter		
Rated load capacity (C.N.)	5 kg ... 75 kg	15 kg ... 75 kg	15 kg ... 75 kg	-	-	-
Accuracy class	OIML 3 000 d	0.02 %	0.02 %	0.005 %	OIML 6 000 d	0.005 %
Internal resolution	24 bits	24 bits	24 bits	24 bits	24 bits	24 bits
Calibrated resolution	500 000 pts	500 000 pts	500 000 pts	±500 000 pts	±500 000 pts	±500 000 pts
Max. measuring speed	6.25 ... 1600 meas./s.	6.25 ... 1600 meas./s.	6.25 ... 1600 meas./s.	6.25 ... 1600 meas./s.	6.25 ... 1600 meas./s.	6.25 ... 1600 meas./s.
Logic Input / Output	● / ● / ● / ● / 2 I / 4 O	● / ● / ● / ● / 2 I / 4 O	● / ● / ● / ● / 2 I / 4 O	● / ● / ● / ● / 2 I / 4 O	● / ● / ● / ● / 2 I / 4 O	● / ● / ● / ● / 2 I / 4 O
Analog output	-	-	-	-	-	○
Communication	RS485 CANbus	RS485 CANbus	RS485 CANbus	RS232, RS485 CANbus	RS232, RS485 CANbus	USB, RS485 CANbus, Ethernet
Construction	Aluminum	Stainless steel	Stainless steel	Rail DIN support	Aluminum box	Rail Din housing
Protocols	MODBUS CANopen®	MODBUS CANopen®	MODBUS CANopen®	MODBUS CANopen®	MODBUS CANopen®	Modbus, Profibus-DP CANopen® Ethernet/IP, Profinet, EtherCAT
Protections	IP65	Sealed, IP69K	IP69K, EHEDG	-	IP67	-
Display	-	-	-	-	-	eNodTouch



Headquarter: Technosite Altea - 294, Rue Georges Charpak - 74100 JUVIGNY - FRANCE
 SCAIME SAS - 294, RUE GEORGES CHARPAK - CS 50501 - 74105 ANNEMASSE CEDEX - FRANCE
 Tél. : +33 (0)4 50 87 78 64 - Fax : +33 (0)4 50 87 78 46 - info@scaime.com - www.scaime.com
 Download all our documents on our website

FA-CHECKWEIGHING-E-0916 - SCAIME - SIREN 389 325 283 - R.C.S. THONON LES BAINS - SIRET 389 325 283 00015 - Noncontractual pictures - SCAIME reserves the right to bring any modification without prior notice - All rights reserved.



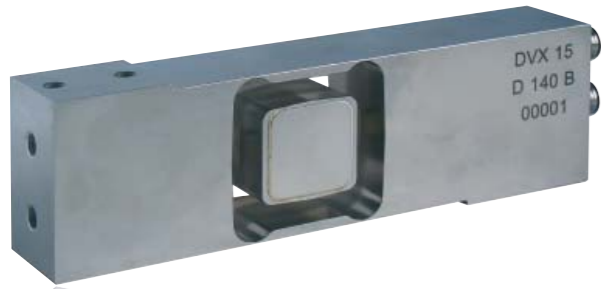
Dynamic Weighing

Grading, Check-weighing



Weighing, controlling at high speed...

SCAIME designs solutions offering speed, accuracy and functions adapted to the specific requirements of dynamic weighing. SCAIME's load cells, electronics and software are a perfect match for checkweighing, and grading applications.



LOAD CELLS:

DVS



SCAIME's wide range of load cells allow customers to solve their specific requirements for dynamic weighing.

DVX



High speed digital load cells...

SCAIME have developed a range of high performance digital load cells. Specially designed for dynamic applications in hardest environments.

- Single point load cells
- Capacities from 5 to 75 kg
- Integrated eNod electronics
- Dynamic checkweighing functions
- 2 digital inputs and 4 outputs
- CANopen® and MODBUS Communication
- Stainless steel IP69K (DVX/DVS) or aluminum IP65 (AAD)
- Hygienic design, EHEDG compliant (DVS)

AAD



A comprehensive range...

- Single point or bending beam load cells
- Capacities from 1 to 5 000 kg
- Aluminum or stainless steel
- Numerous mounting possibilities
- Damping kit SPEEDCELL

AG



F60X



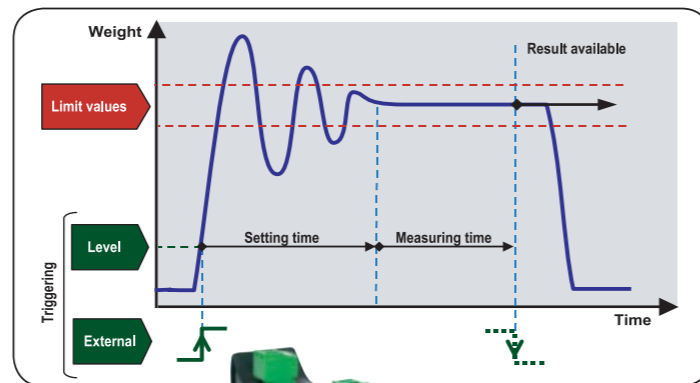
AK



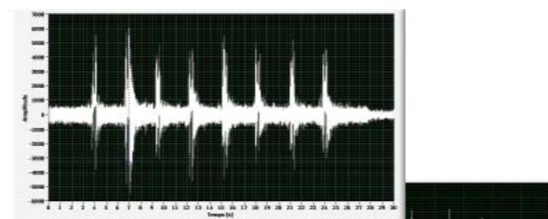
AQ



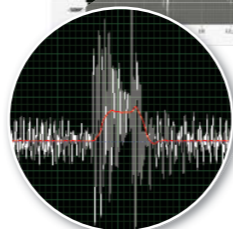
AXL



▼ checkweigher signal without filtering

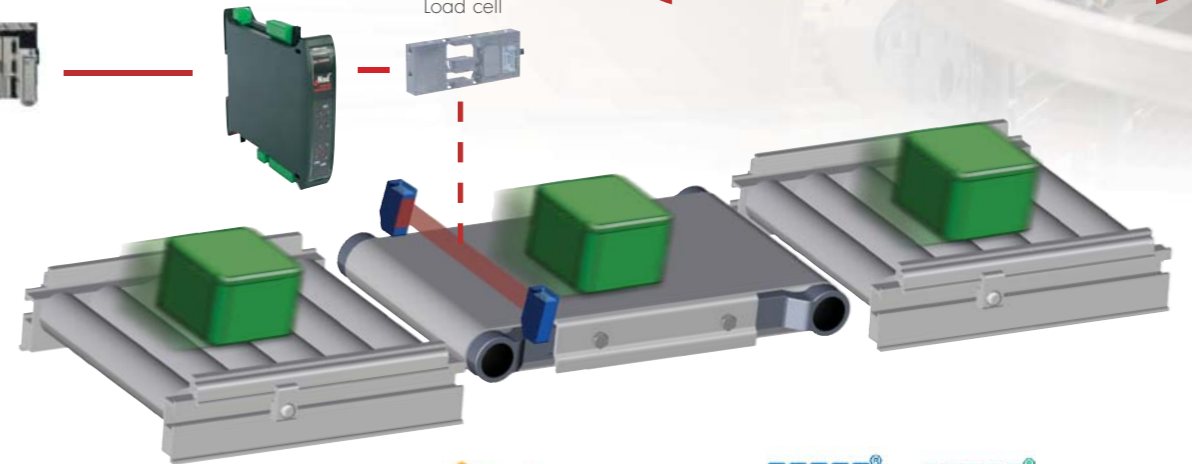


signal filtered with eNod or DVX



eNod4-C

Load cell



CANopen Modbus EtherNet/IP PROFIBUS PROFINET EtherCAT

Touchscreen eNodTouch

All eNod4 weighing controllers could be associated with our range of Human-Machine interfaces eNod Touch. These LCD Touchscreens allow weight display, system calibration and setting as well as application control.

ELECTRONICS:

With eNod controllers and digital load cells, SCAIME offers a cost effective and powerful solution for the control of dynamic weighing systems.

Powerful functionalities:

In addition to offering 1000 meas./s. transmission rate with an available resolution of $\pm 500\ 000$ divisions, eNod3, eNod4 and DVX/AAD integrate specific application software dedicated to dynamic weighing:

- It takes care of complete signal processing by calculating automatically weight values.
- It controls by itself the complete weight acquisition process, also taking in consideration external detectors signals.
- It includes powerful digital filters dedicated to vibration noise cancellation.

Designed for communication:

eNod controllers and DVX/AAD digital load cell are designed to easily be connected to all kinds of PLC's with RS485, RS232 and CANbus, using MODbus-RTU, CANopen®, PROFIBUS-DP, Ethernet/IP, Modbus-TCP and Profinet protocols.

PC SOFTWARE:

eNodView is the software for DVX/AAD or eNod's calibration and programming. It is also a powerful tool for signal acquisition and analysis, allowing:

- Graphic visualization of the signal in frequency and time
- Simulation and programming of integrated digital filters

These capabilities make eNodView the ideal tool for the analysis of vibrations in mechanical systems with user optimization of programmable filters.

